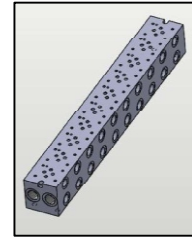


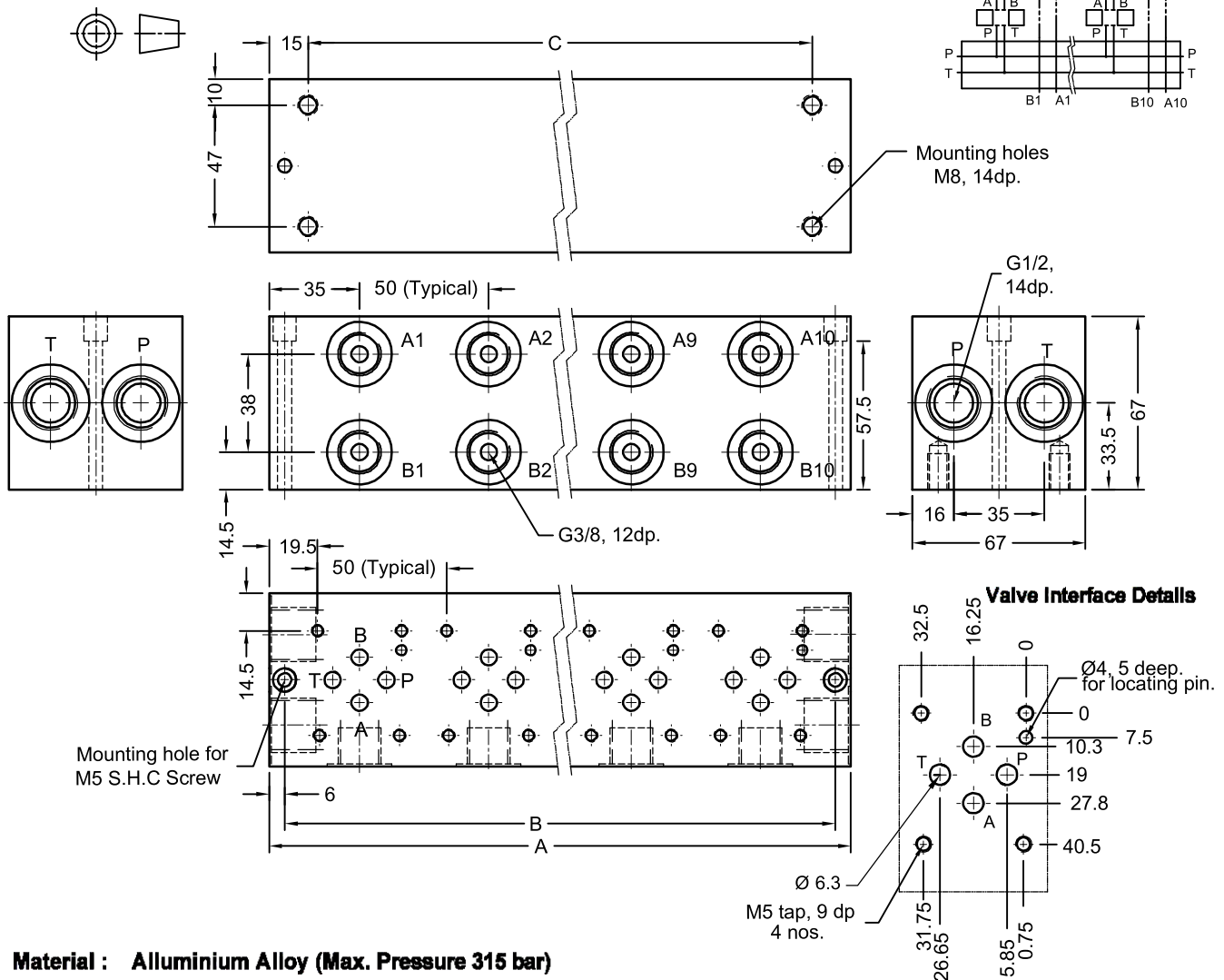
Description

These Bar Manifolds are designed to connect valves having interface conforming to ISO 4401-03-02 in parallel in least possible physical space. These Manifolds connect all P ports of the interface to a common passage generously sized for least possible pressure drop. So also the T ports. The maximum number of interfaces available on manifold bar are 10.



Unit dimensions

Dimensions in mm.



Material : Alluminium Alloy (Max. Pressure 315 bar)

| No. of stations | 1 | 2 | 3 | 4 | 5 | 6 | 7 | 8 | 9 | 10 |
|-----------------|--------------|--------------|--------------|--------------|--------------|--------------|--------------|--------------|--------------|---------------|
| Model no. | 1P02155/1-10 | 1P02155/2-10 | 1P02155/3-10 | 1P02155/4-10 | 1P02155/5-10 | 1P02155/6-10 | 1P02155/7-10 | 1P02155/8-10 | 1P02155/9-10 | 1P02155/10-10 |
| A | 70 | 120 | 170 | 220 | 270 | 320 | 370 | 420 | 470 | 520 |
| B | 58 | 108 | 158 | 208 | 258 | 308 | 358 | 408 | 458 | 508 |
| C | 40 | 90 | 140 | 190 | 240 | 290 | 340 | 390 | 440 | 490 |

Ordering code

